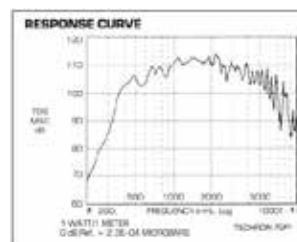
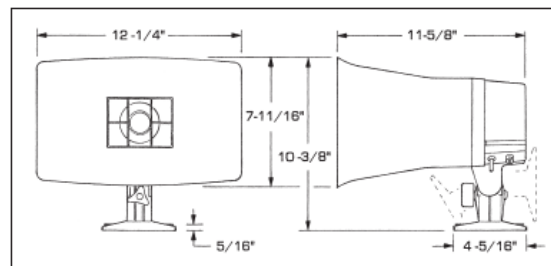


Analog Large Horn



Available in the following models:




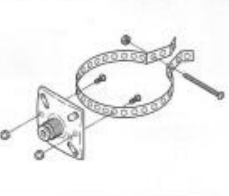
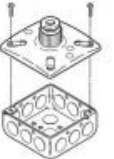
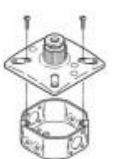
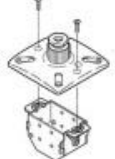

SPKR-140-8: Indoor/Outdoor Analog re-entrant horn, 11-5/8" deep by 12-1/4" wide by 7-11/16" tall, 8 ohm, rated at 40 Watts continuous duty, impact and UV resistant ABS construction.

SPKR-140-T: Indoor/Outdoor Analog re-entrant horn; 11-5/8" deep by 12-1/4" wide by 7-11/16" tall; Input taps at 40, 20, 10, 5, 2.5 watts & 4.8, 14.5, 28, 50 or 78 ohms; impact and UV resistant ABS construction. Includes 70V Transformer.

Description:

Designed for noise penetration and clear speech intelligibility. Conservatively rated at 40 watts continuous duty. Excellent sensitivity as a microphone in talk-back systems. Diffuser suppresses on-axis hot spot and improves dispersion. Weather and corrosion resistant construction using stainless steel fasteners and engineering grade UV resistant thermoplastics.

Mounting Methods:

			
KBC123 Kit Beam Clamp Mount	KBJ123 Kit Bar Joist Mount	KTG123 Kit Toggle Bolt Mount	KPM123 Kit Pole Mount
			
Fastening to Standard Utility Boxes 4" Square, Octagon or Duplex (Boxes not included)			KB400 Bug Screen