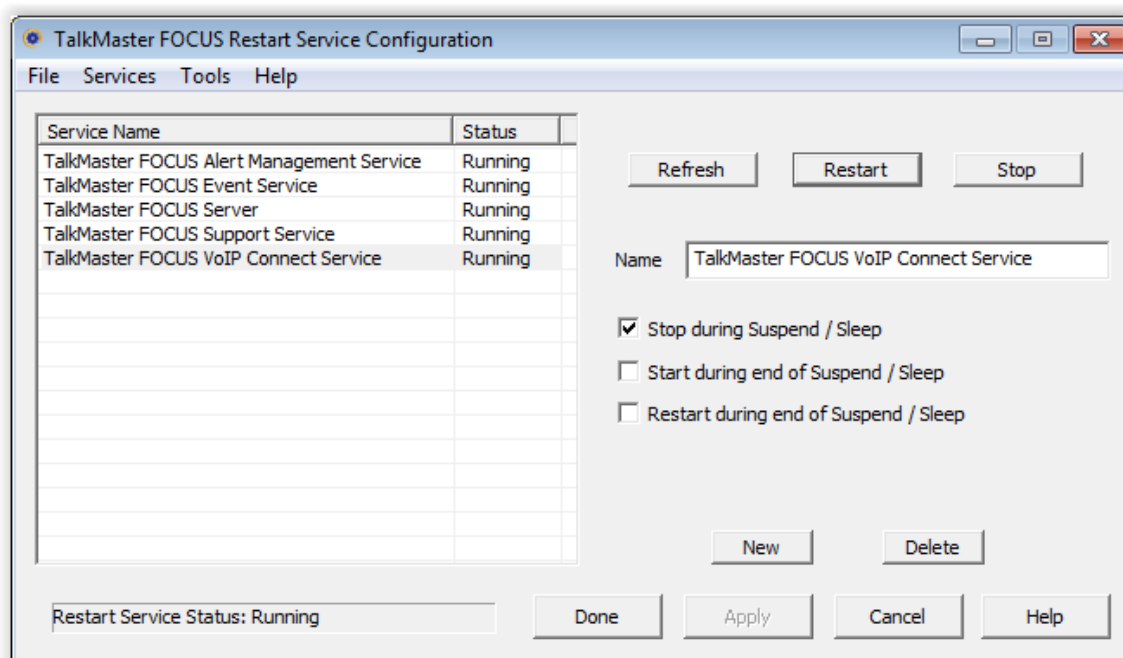


# TalkMaster™ FOCUS

## Restart Service Configuration

## Reference Manual





# Table of Contents

Getting Started .....	1
Welcome.....	1
Release Notes .....	1
Setup and Configuration .....	3
Starting the Application.....	3
Usage .....	3
Menu Options .....	5
File Menu Options .....	5
Services Menu Options .....	5
Help Menu Options .....	5
Support Information.....	7
Contacting Technical Support .....	7
About Us .....	7
Index.....	9



# Getting Started

## Welcome

Welcome to the TalkMaster FOCUS Service Restart Configuration application. The Restart Service can be used to Restart, Stop or Start any of the TalkMaster FOCUS Services. It can also be used to automatically shutdown and restart the TalkMaster FOCUS services when a laptop goes into and out of Suspend or Sleep mode.

## Release Notes

June 2016

- Initial Release



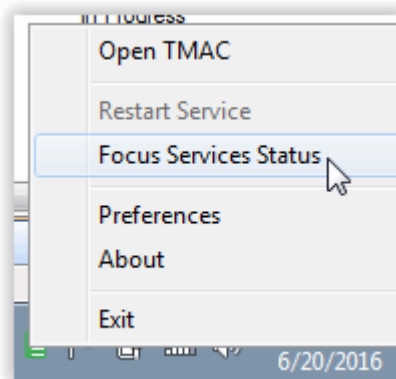
# Setup and Configuration

## Starting the Application

The FOCUS Service Restart Configuration application can be started by right-clicking on the TalkMaster FOCUS Server status ICON in the Windows System Tray. The ICON will be green, yellow or red depending on whether the TalkMaster FOCUS Server is currently running and licensed.



To start the Service Restart Configuration application, select the **FOCUS Services Status** option

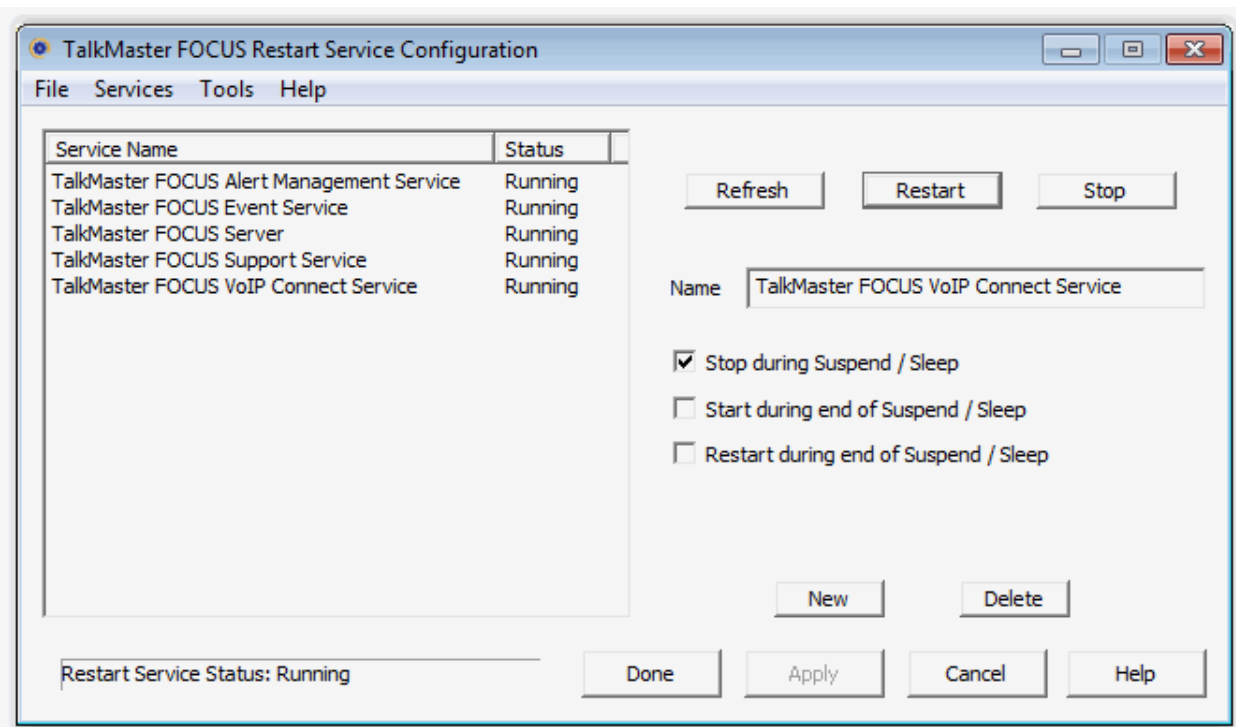


## Usage

The Restart Service can be used to Restart, Stop or Start any of the TalkMaster FOCUS Services. The pre configured services are:

- **TalkMaster FOCUS Alert Management Service** - Optional and separately licensed component for reading and sending audio messages from RSS and CAP/Atom feeds
- **TalkMaster FOCUS Event Management Service** - Optional and separately licensed component for sending audio messages based on IP Endpoint inputs and activities
- **TalkMaster FOCUS Server** - Main component required for any TalkMaster function
- **TalkMaster FOCUS Support Service** - Used to collect program tracking information from the Server and IP Endpoint
- **TalkMaster FOCUS VoIP Connect Service** - Optional and separately licensed component for paging to groups of IP Endpoints from a SIP based phone system

Additionally, the Service Restart Configuration application can be used to configure what happens when the PC goes into Suspend or Sleep mode. This is typically used for support personnel who use a laptop to configure and add new IP Endpoints (Production TalkMaster FOCUS Servers must not be set to go into sleep or suspend mode).



**Refresh** - Press this button to update the Status of all of the services

**Start/Restart** - Select a Service and press this button to start or restart a service

**Stop** - Select a Service and press this button to stop a service

To Configure the default action for a Service, highlight and select one or more of the following options:

- **Stop during Suspend / Sleep** - When the PC goes into Suspend or Sleep mode, the selected service will be automatically stopped. This is the default action
- **Start during end of Suspend / Sleep** - When the PC comes out of Suspend or Sleep mode, the selected service will be automatically started
- **Restart during end of Suspend / Sleep** - When the PC comes out of Suspend or Sleep mode, the selected service will be automatically re-started

**New** button - Provides the ability to add a new service to the list. For instance, a custom service that has been written to interact with the TalkMaster FOCUS Server

**Delete** button - Deletes an entry from the list

**Done** button - Exits the program

**Apply** button - Applies the changes that have been made without exiting the program

**Cancel** button - Cancels any changes that have not been saved

**Help** button - Displays the online Help



## Menu Options

### File Menu Options

The File menu has the following option:

- **Exit** - exits the Restart Service Configuration application

### Services Menu Options

The Services menu has the following option:

- **Stop Service** - This option stops the currently highlighted service
- **Start Service** - This option starts the currently highlighted service
- **Restart Service** - This option restarts the currently highlighted service
- **Stop All Services** - This option stops all of the services from the list below

### Help Menu Options

The Help Menu has the following options:

- **About** - displays the current software version



## **Support Information**

### **Contacting Technical Support**

For Information on contacting Technical Support, please visit our web site at:

[www.digitalacoustics.com](http://www.digitalacoustics.com)

### **About Us**

Digital Acoustics, LLC

[www.digitalacoustics.com](http://www.digitalacoustics.com)

Digital Acoustics®, TalkMaster®, ii3®, IP7® and UBAM® are trademarks of Digital Acoustics LLC. All other marks used are properties of their respective owners. Digital Acoustics' product designs are packaged by leading manufacturers around the world.

© 2007 - 2022 Digital Acoustics, LLC

All Rights Reserved



## Index

### A

About Us.....7

### F

File Menu Options .....5

Folder Groups .....5

### H

Help Menu Options .....5

### P

Preferences..... 5

### S

Support Settings ..... 5

### T

Technical Support..... 7



## Notes



DIGITAL  
ACOUSTICS

[www.digitalacoustics.com](http://www.digitalacoustics.com)

© Copyright 2005-2022 Digital Acoustics LLC, All Rights Reserved